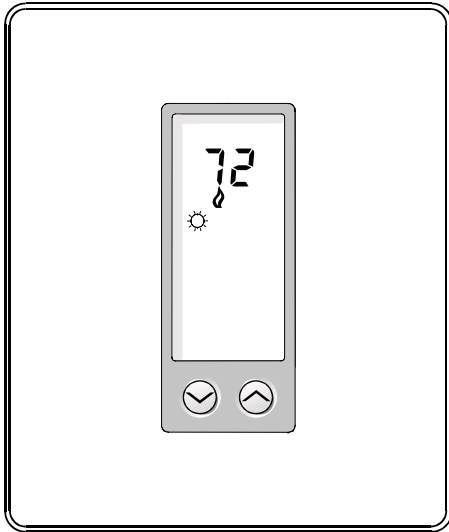


DSL-100
Heat Only Thermostat
OPERATING INSTRUCTIONS



SEE REVERSE FOR
INSTALLATION INSTRUCTIONS

Your new digital thermostat has been designed to provide accurate control and display of room temperature. In addition, it will also display all relevant information pertaining to your system.

The clearly marked buttons and informative display make it extremely easy to understand and simple to use.

Please take a few moments to read the brief instructions and familiarize yourself with the various functions in order to obtain maximum benefit from this truly unique electronic control.

GENERAL INFORMATION

The thermostat normally displays room temperature, mode of operation and whether heating is currently on. The two buttons on the front of the unit allow complete control of the equipment.

Raising or lowering the setpoints in heating is as simple as pushing a button. In addition, you may choose to display the temperature in °F or °C.

USER CONTROLS

MODE

The DSL-100 thermostat is a heat only control and is permanently in the heat mode.

HEATING ⬇

Select the temperature you want your equipment to maintain while in the heating mode by pressing either the ▼ or ▲ buttons.

CELSIUS / FAHRENHEIT

Simultaneously press ▼ or ▲ to switch between Celsius and Fahrenheit temperature display.

LIMITED OVERRIDE

When the keyboard is locked (switch #2 ON), the user may override the temperature setpoint for 1 hour by pressing either the ▼ or ▲ button. The range of temperature override is ±6°F or ±3°C from the programmed daytime setpoint.

INSTALLER NOTES

This page intentionally left blank

111-123

This page intentionally left blank

POWER FAILURES

Your thermostat employs the latest developments in solid state electronic technology.

One of the unique features of your thermostat is that there is no battery required to maintain your selected setpoints in the event of a power loss as the memory is unaffected by power failures of any duration.

When power is restored, the thermostat will continue operating as if the power had never been off.

TEMPERATURE ACCURACY

Full temperature accuracy will be realized only after the thermostat has been installed and powered for at least one hour.

WARRANTY

LIMITED TWO YEAR WARRANTY

The manufacturer warrants to the original purchaser that its product and component parts will be free from defects in workmanship and materials for a period of two years from the date of purchase. Your dealer will provide free replacement of your DSL thermostat upon proof of purchase.

EXCLUSIONS

This warranty does not apply in the event of misuse, abuse or as a result of unauthorized alterations or repairs. The manufacturer will not be liable for any consequential damages including, without limitation, damages resulting from defects, loss of use, or misuse.

This equipment, if installed in strict accordance with the manufacturer's instructions, complies with the limits for a Class B computing device pursuant to Subpart J of Part 15 of FCC rules.

INSTALLER NOTES

This page intentionally left blank

INSTALLATION INSTRUCTIONS

LOCATION

To ensure proper operation, the thermostat should be mounted on an inside wall in a frequently occupied area of the building. In addition, its position must be at least 18" (46cm) from any outside wall, and approximately 5' (1.5m) above the floor in a location with freely circulating air of an average temperature.

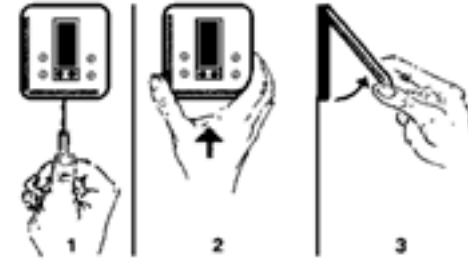
BE SURE TO AVOID THE FOLLOWING LOCATIONS:

- behind doors or in corners where freely circulating air is unavailable
- where direct sunlight or radiant heat from appliances might affect control operation
- on an outside wall
- adjacent to, or in line with, conditioned air discharge grilles, stairwells, or outside doors
- where its operation may be affected by steam or water pipes or warm air stacks in an adjacent partition space, or by an unheated/uncooled area behind the thermostat
- where its operation will be affected by the supply air of an adjacent unit
- near sources of electrical interference such as arcing relay contacts

THERMOSTAT INSTALLATION

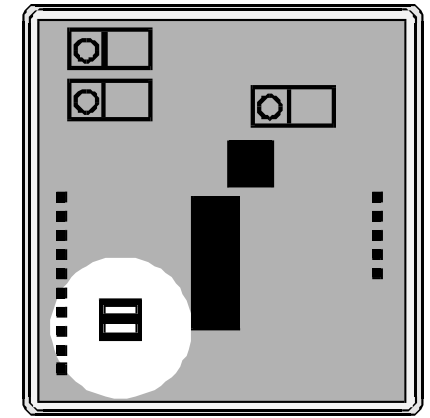
1. Insert a flat blade screwdriver or a coin 1/8" into the slot located in the bottom center of the thermostat case and twist 1/4 turn. When you feel or hear a "click," grasp the case from the bottom two corners and separate from the subbase as shown in the diagram at the right. *Some models require more force than others when separating due to the number of terminals on the subbase.*
2. Swing the thermostat out from the bottom.
3. Lift the thermostat up and off the subbase.
4. Place the rectangular opening in the subbase over the equipment control wires protruding from the wall and, using the subbase as a template, mark the location of the two mounting holes (exact vertical mounting is necessary only for appearance).
5. Use the supplied anchors and screws for mounting on drywall or plaster; drill two 3/16" (5mm) diameter holes at the marked locations; use a hammer to tap the nylon anchors in flush to the wall surface and fasten subbase using the supplied screws. (Do not overtighten!)

6. Connect the wires from your system to the thermostat terminals as shown in the wiring diagrams. Carefully dress the wires so that any excess is pushed back into the wall cavity or junction box. Ensure that the wires are flush to the plastic subbase. The access hole should be sealed or stuffed to prevent drafts from the wall affecting the thermostat.

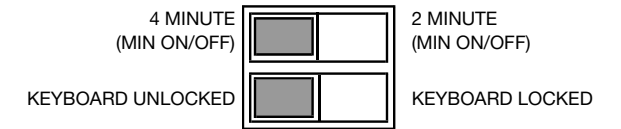


REPLACING THE THERMOSTAT ON THE SUBBASE

1. Position the thermostat on the hinged tabs located at the top of the subbase.
2. Gently swing the thermostat down and press on the bottom center edge until it snaps in place.



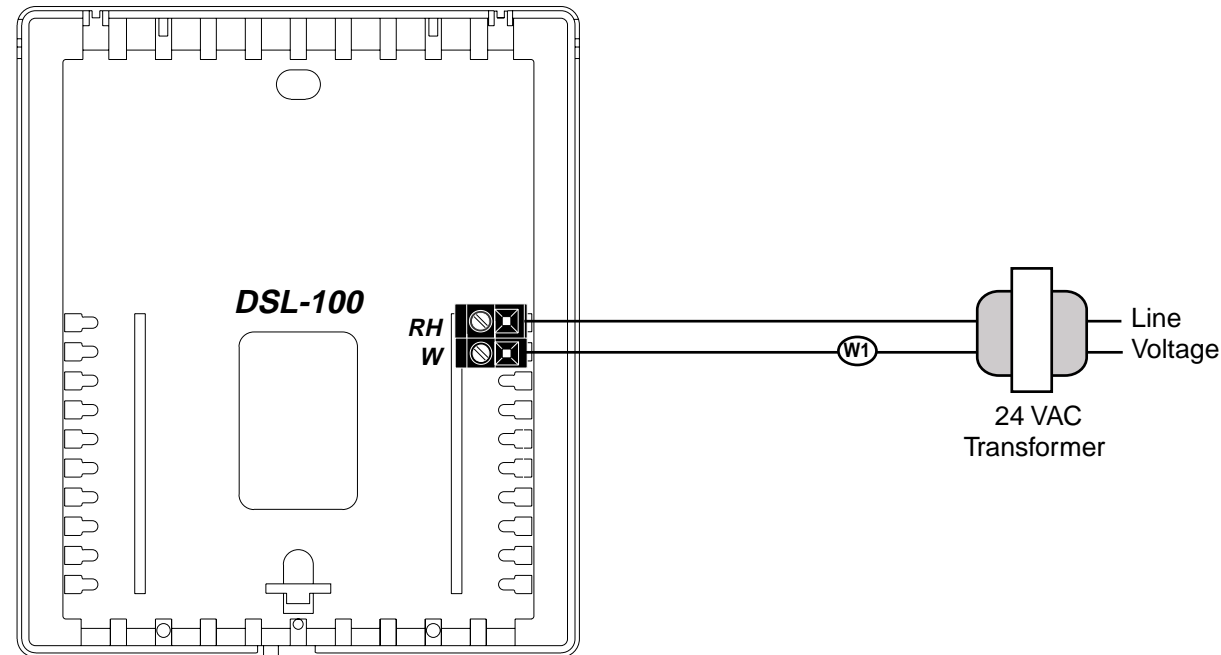
← OFF ON →



SPECIFICATIONS

Rated Voltage	20-30 VAC, 24 nominal
Rated Current Max.	0.08 Amps to 1.5 Amps continuous per output with surges to 4 Amps Max.
Control Range	Heating: 38° to 88°F in 1° Steps 5° to 30°C in 1° Steps
Thermostat Measurement Range	28° to 124°F or 0° to 48°C
Control Accuracy	± .5°C at 20°C ± 1°F at 68°F

NOTE: This thermostat contains electronic circuitry replacing the conventional mechanical anticipator.



OUTPUT TERMINAL FUNCTIONS

RH	24 VAC supply from heating equipment
W	Heat energized with a heating call